



Society of M
UNIVERS



Manufacturing Engineers

SITY OF TORONTO

WHAT IS UTSME?

- University of Toronto office for the Society of Manufacturing Engineers
- Aim to introduce the manufacturing industry to students, provide resources and opportunities for students to obtain jobs in the manufacturing industry

- Connect students and professionals of similar interests by offering plant tours in various disciplines, seminars on hot manufacturing topics, professional workshops and roundtable discussions, as well as social and networking events like wine and cheese
- The first ever Design/Case competition sponsored by industry

WHY YOU SHOULD JOIN

- We offer hard-to-find technical information on state-of-the-art manufacturing processes and applications
- Unparalleled networking opportunities to help you land that first job in your career path
- Plant Tours, Seminars, Career workshops and more

NEAT! HOW DO I SIGN UP?

- In person at our booth
- Online at <http://sme.skule.ca/>

WHAT IS MANUFACTURING ENGINEERING?

Manufacturing engineers direct and coordinate the processes for making things - from the beginning to the end.

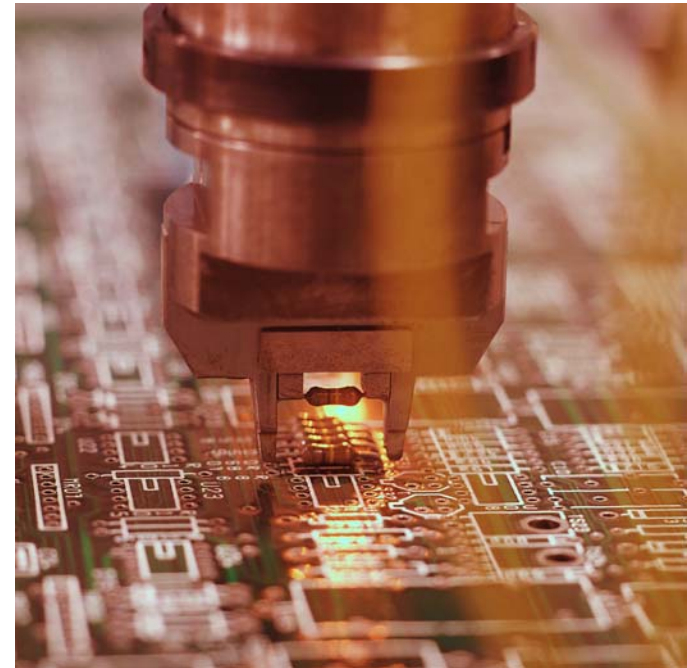
As businesses try to make products better and at less cost, it turns to manufacturing engineers to find out how. Manufacturing engineers work with all aspects of

manufacturing from production control to materials handling to automation.

The assembly line is the domain of the manufacturing engineer. Machine vision and robotics are some of the more advanced technologies in the manufacturing engineer's toolkit.

SOME TYPES OF INDUSTRIES:

- Transportation, heavy industries
- Minerals, environment
- Chemical, petrochemical, oil & gas
- Biomedical, pharmaceutical
- Hi-Tech, computer and electrical
- Food engineering and many more



PAST PLANT TOURS



- Past plant tours have included trips to Bombardier and Toyota manufacturing facilities



MANUFACTURING IN PERSPECTIVE

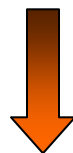
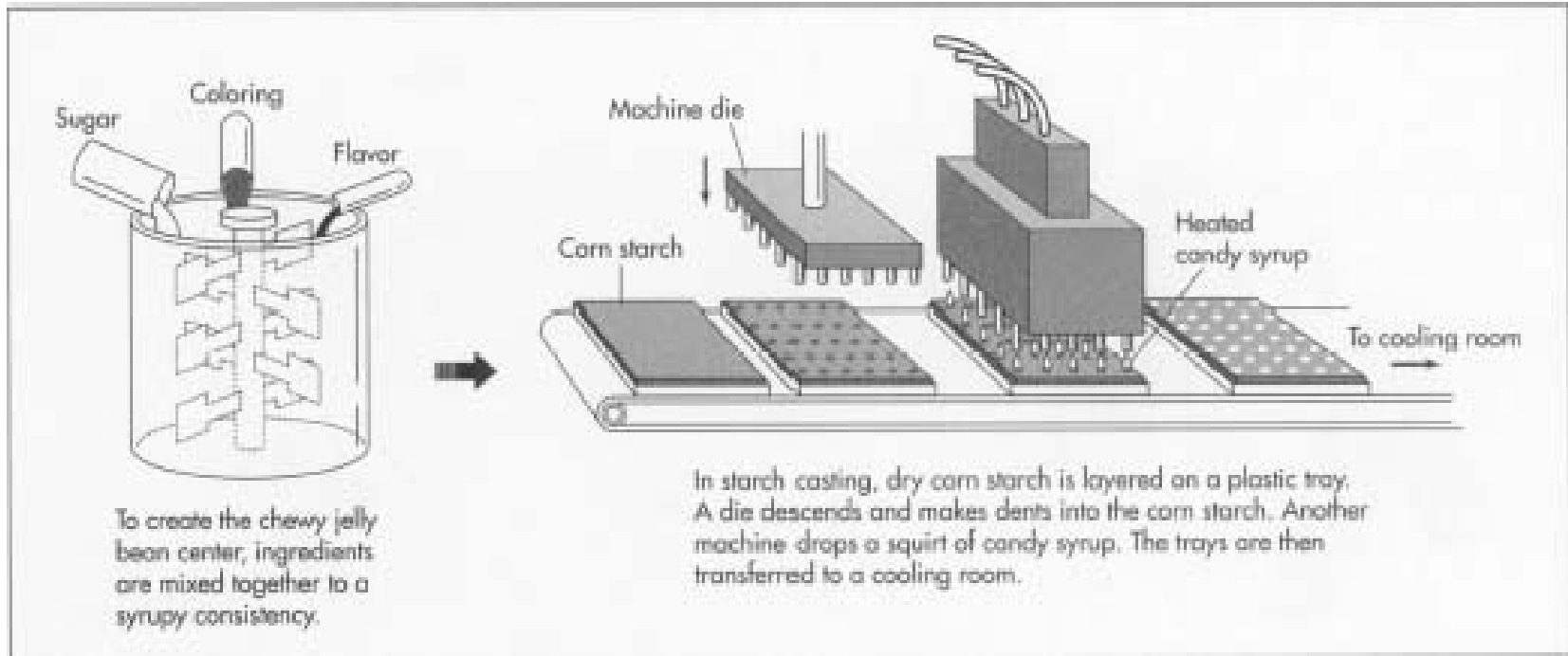
HOW ARE JELLY BEANS MADE!?

- **Raw Materials:** sugar, corn syrup, and food starch. Relatively minor amounts of lecithin (an emulsifier), anti-foaming agents, beeswax or carnauba wax, salt, confectioner's glaze and flavouring



- **Design:** Mix ingredients, then cast syrup in a die and let the beans cool





- **Quality Control:** Jelly beans must meet regulatory requirements for safety and quality. Among the manufacturing steps, starting with laboratory testing, tasting, observation of color quality, and both machine sorting and inspection to identify and oust imperfect candies



- **Packaging:** The process of making the jelly beans takes 6-10 days. The packaging machine can package and seal about 80,000 bags of jelly beans a day

**SIGN UP NOW
AND HELP YOURSELF
TO THE JELLY BEANS
AND OTHER CANDY!**